

Certificate of Analysis

Report Date April 12, 2021

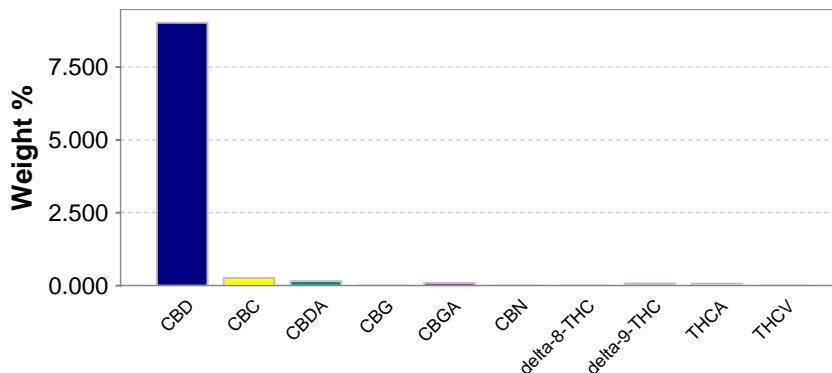
Company: Cannabetter Farm
Project: Cannabetter Farm
GEL SDG: 540019
Contact: Matthew Campbell
GEL Sample ID: 540019006
Matrix: Oil
Client Sample ID: TC1 BaOx Terpenes
Collect Date: 05-APR-21 09:00
Receive Date: 07-APR-21 10:30



HPLC Cannabinoids

| Analyte | Result | Weight % | MU % | Analysis Date | Batch | Dltn. | Method |
|--|------------|----------|-----------|-----------------|---------|-------|----------------------|
| CBD | 90.2 mg/g | 9.02 % | (+/- 4) | 08-Apr-21 23:36 | 2112781 | 200 | GEL SOP GL-OA -E-078 |
| CBC | 2.66 mg/g | 0.266 % | | 08-Apr-21 23:49 | 2112781 | 20 | GEL SOP GL-OA -E-078 |
| CBDA | 1.51 mg/g | 0.151 % | (+/- 2.5) | | | | |
| CBG | < 0.2 mg/g | < 0.02 % | | | | | |
| CBGA | 0.911 mg/g | 0.0911 % | | | | | |
| CBN | < 0.2 mg/g | < 0.02 % | | | | | |
| delta-8-THC | < 0.2 mg/g | < 0.02 % | | | | | |
| delta-9-THC | 0.727 mg/g | 0.0727 % | (+/- 5) | | | | |
| THCA | 0.679 mg/g | 0.0679 % | (+/- 5) | | | | |
| THCV | < 0.2 mg/g | < 0.02 % | | | | | |
| Total Potential CBD (CBD + CBDA x 0.877) | | 9.15 % | | 12-Apr-21 16:07 | 2112782 | 1 | GEL SOP GL-OA -E-078 |
| Total Potential THC (d9-THC + d9-THCA x 0.877) | | 0.132 % | | | | | |

Cannabinoid Profile



Test results for NELAP or ISO 17025 accredited results are verified to meet the requirements of those standards, with any exceptions noted. The results reported relate only to the items tested and to the sample as received by the laboratory. These results may not be reproduced, except as full reports, without approval by the laboratory. Copies of GEL's accreditations and certifications can be found on our website at www.gel.com.

